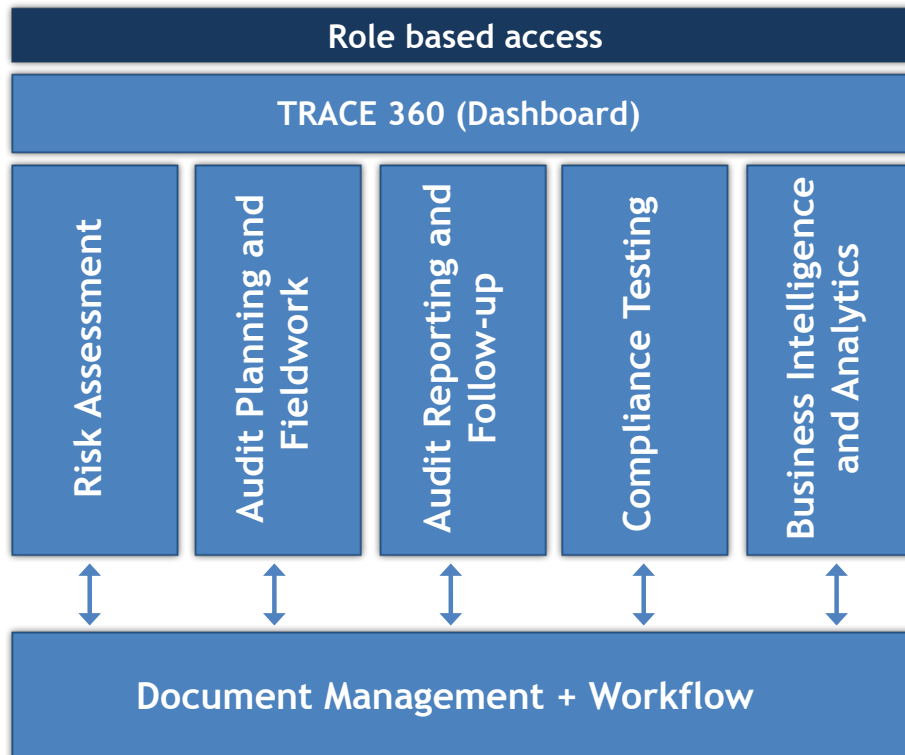


# TRACe

Empowering Audit Automation and Productivity

TRACe is a web based tool for auditors, inspectors and regulators. By using TRACe, auditors automatically comply with ISO's standard Plan-Do-Check-Act methodology. TRACe is designed to be flexible enough for auditors to define, plan and execute audits in different domains. TRACe facilitates control compliance testing and auditing to regulatory standards such as SOX, HIPAA, FDA, SB1386, SAS70, ISO 2700 among others.

TRACe has an integrated document management and workflow at each phase of an audit. Supporting documents, publications and guidelines can be attached to an audit.



## TRACe Advantage

- > TRACeability
- > Standards based
- > Integrated workflow and document management
- > Cost Effective
- > Web based
- > Adaptable
- > Secure

*TRACe provided by MMCS is expected to provide a paper less office to Compliance, Risk Management and Internal Audit functionalities. Towards this objective - we are certainly delighted to have a partner like MMCS, who has delivered several modules in Risk Management, Compliance and Internal Audit. The Solution has helped us in maintaining a lean hierarchical department and at the same time provided us the facility to review controls, risks, audit and compliance aspects that have helped us to keep pace and a tab on the exponential growth that the organization has embarked on."*

**Mr. Sunder Krishna**  
Chief Risk Officer  
Reliance Life Insurance  
Corporation Limited

*TRACe a comprehensive product which matches with most of our requirements. All customizations and enhancements have been carried out seamlessly and support has been timely and helpful.*

*This software could be a good solution for any company looking at an Audit automation solution.*

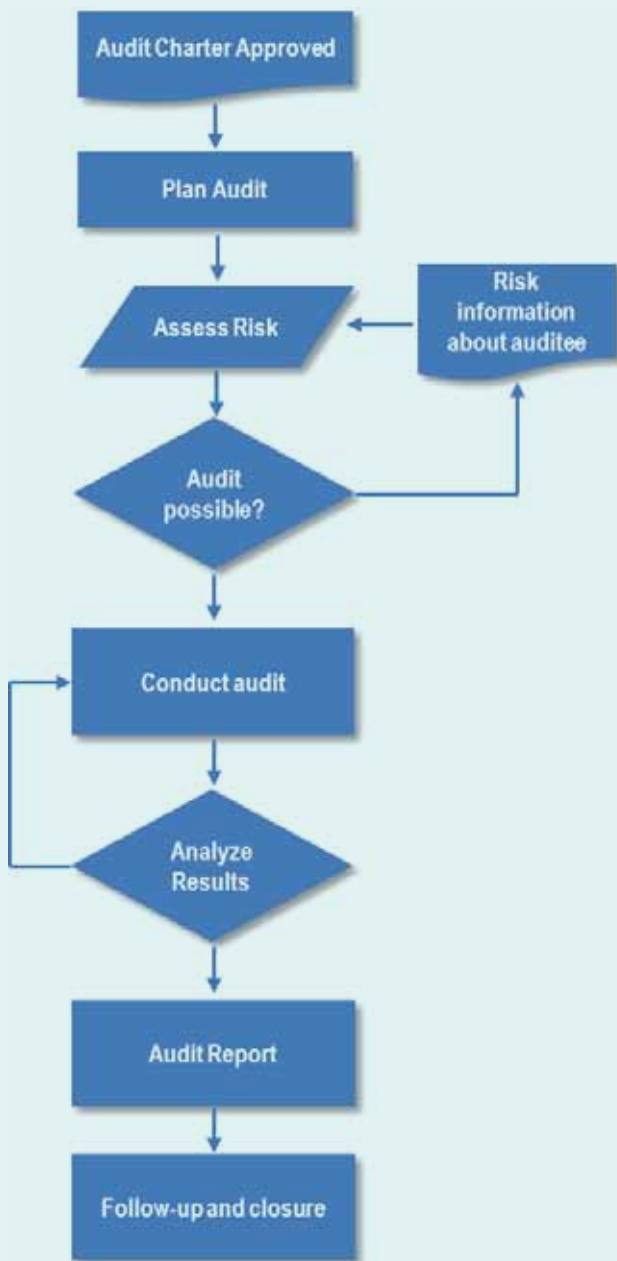
**Mr. Bishwajit**  
Head of Audit  
ING Vysya Bank Limited



MMCS has been awarded European seal of E-Excellence 2008/Gold from European Multimedia Forum



TRACe incorporates EDICT, the document management and workflow engine from MMCS, which has been awarded the Best Office Automation Award from Microsoft.



## Risk Assessment

**Operational and Enterprise Risk:** Define and plan operational and enterprise risk assessments.

**Heat Maps:** Generate customizable customer specific heat maps.

**Risk Register:** Risk Register provides the auditor with current and historical risk assessment results.

## Audit Planning And Field Work

### Audit planning:

- > Defining the audit plan
- > Document Request List
- > Audit Assignment
- > Budgeting
- > Audit Plan Sign Off

### Fieldwork:

- > Audit Testing
- > Work papers
- > Maintaining Finding and Issues
- > Record Actual Time and Cost
- > Document Time and Cost Variance
- > Audit Executive Summary and detailed audit report
- > Audit Signoff

## Compliance

Load check list based compliance 'cartridges' that enable regulators and testers verify compliance. Examples of check list based compliance cartridges include those for:

- > SOX
- > PCI-DSS
- > HIPPA

## Product Versions

**Enterprise:** Customizable. Current product verticals address Banking & Insurance segments.

**Workgroup:** Meets the requirements of practicing auditors.

## System Requirements

- > Microsoft Windows Server 2003/2008
- > Microsoft SQL Server 2005/2008
- > Microsoft Internet Information Server

## Audit Universe

**Function and Process Definition:** Define functions and processes to be audited at a fine granularity.

**Risk and Control Definition:** Define risks and controls and associate one or more tests with each control.

**Audit Definition:** Define a customer audit program by mapping processes, risks and controls.

## TRACe is a product of:

**MULTIMEDIA COMPUTER SYSTEMS**

736, 7th Main, 1st Floor, Mahalaxmi Layout,  
Bangalore -560 086. India  
[www.mmcspl.com](http://www.mmcspl.com)

## Global Sales and Support Partners:



[www.acionyx.com](http://www.acionyx.com)

[www.contentify.com](http://www.contentify.com)